



Stock Data (As of March 31, 2024)

Stock Data

Number of Shares Authorized600,000,000 shares
 Number of Shares Issued266,505,623 shares
 Number of Shareholders24,427

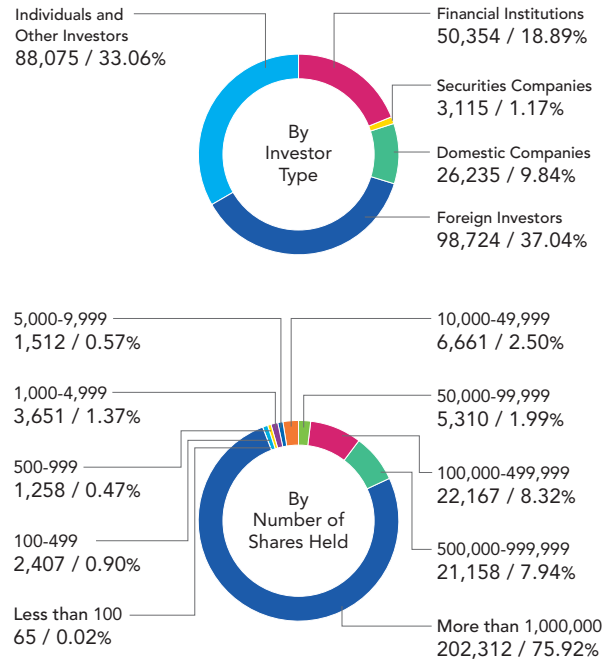
Major Shareholders (Top 10)

Major Shareholders	Number of Shares Held (in thousands)	Percentage of Shareholding (%)
The Master Trust Bank of Japan, Ltd.(Trust Account)	28,454	13.35
Crossroad Co., Ltd.	21,867	10.26
JP Morgan Chase Bank 380815	17,594	8.26
Custody Bank of Japan, Ltd., Trust Account	12,247	5.75
Yoshiyuki Tsujimoto	7,963	3.74
Haruhiro Tsujimoto	6,026	2.83
Ryozo Tsujimoto	5,968	2.80
State Street Bank and Trust Company 505025	4,249	1.99
Kenzo Tsujimoto	4,039	1.90
The Master Trust Bank of Japan, Ltd. (Stock Grant ESOP Trust Account 76744)	3,991	1.87

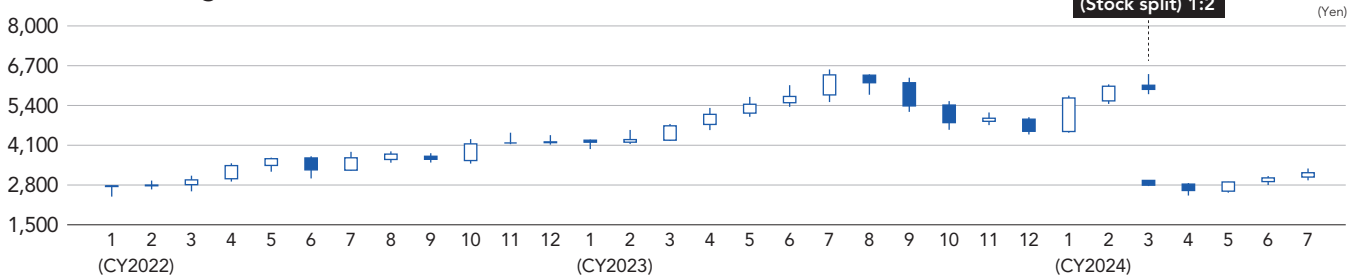
Note:1. Capcom owns 53,394 thousand shares as treasury stocks. The stocks owned by the company are excluded from the above list.
 2. The Master Trust Bank of Japan, Ltd. (Stock Grant ESOP Trust Account 76,744) is a trust established in conjunction with the introduction of the Stock Grant ESOP Trust. Note that such shares are not included in the number of treasury stock above.

Shareholders Breakdown

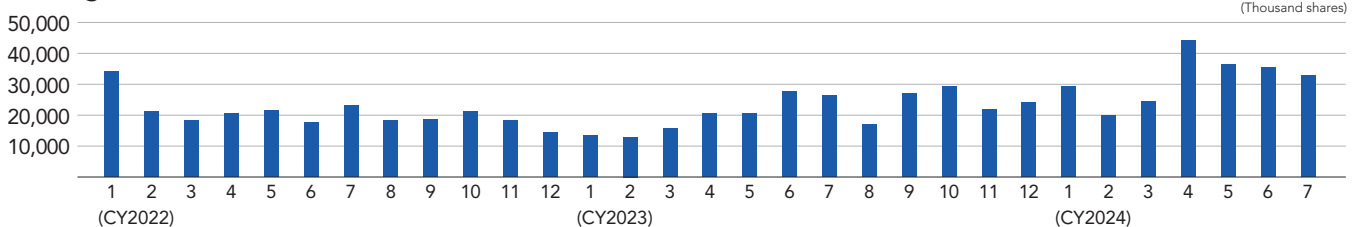
Number of shares held (in thousands) / (%)



Stock Price Range*1



Trading Volume



11-Year Trend of Stock Price and Trading Volume*2

	2014	2015	2016	2017	2018	2019	2020	2021	2022	2023	2024
Stock Price	244.75	298.63	343.13	271.38	574.75	620.00	847.50	1,797.50	1,484.00	2,367.50	2,795.00
High	291.25	301.63	384.38	359.63	646.25	761.25	891.25	1,892.50	1,900.00	2,397.50	2,959.00
Low	174.50	192.63	243.00	240.88	263.38	475.75	508.00	802.50	1,210.50	1,456.50	2,766.00
Trading Volume	150,408,300	143,234,700	162,642,100	183,455,500	171,969,350	258,438,800	183,399,500	180,877,400	275,620,400	215,342,700	288,160,900

*1 With an effective date of April 1, 2024, Capcom performed a 2-for-1 split of its common stock. (Years Ended March 31)
 *2 The stock was split on a basis of two shares for every share of common stock on April 1, 2018, 2021 and 2024. Consequently, for convenience the figures presented here assume that the relevant stock splits were performed on April 1, 2013.